

TRIM LINE

INSIDE BACK COVER(9in. X12in.)

INSIDE FRONT COVER(9in. X12in.)

BACK COVER(9in. X12in.)

FRONT COVER(9in. X12in.)

SAFE ZONE

FOLD

SAFE ZONE

FOLD

SAFE ZONE

FOLD

SAFE ZONE

FOLD

TOP EDGE OF INSIDE FACE WHEN FOLDED IN HALF

TOP EDGE OF OUTSIDE FACE WHEN FOLDED IN HALF

BLEED AREA: TEXT AND IMAGES IN THIS RED SHADED AREA WILL BE TRIMMED.

WARNING: IMAGES AND TEXT OUTSIDE THE GREEN DASHED LINES WILL BE TOO CLOSE TO THE TRIM LINE AND MIGHT GET TRIMMED OFF

SAFE ZONE

DO NOT place important texts or images beyond the green dotted area to ensure that elements would not get cut.

TRIM LINE

Blue dotted line is the actual cut of the final design.

BLEED

Extend the background of your artwork to the edge of this template if you want your artwork to extend to the edge of your final prints. 1/8 inch bleed on each side is our requirement.

BORDERS

If your artwork has borders. It's thickness should be at least 3/8" from the trim line in order to preserve the symmetry of your design.

PrintPlace

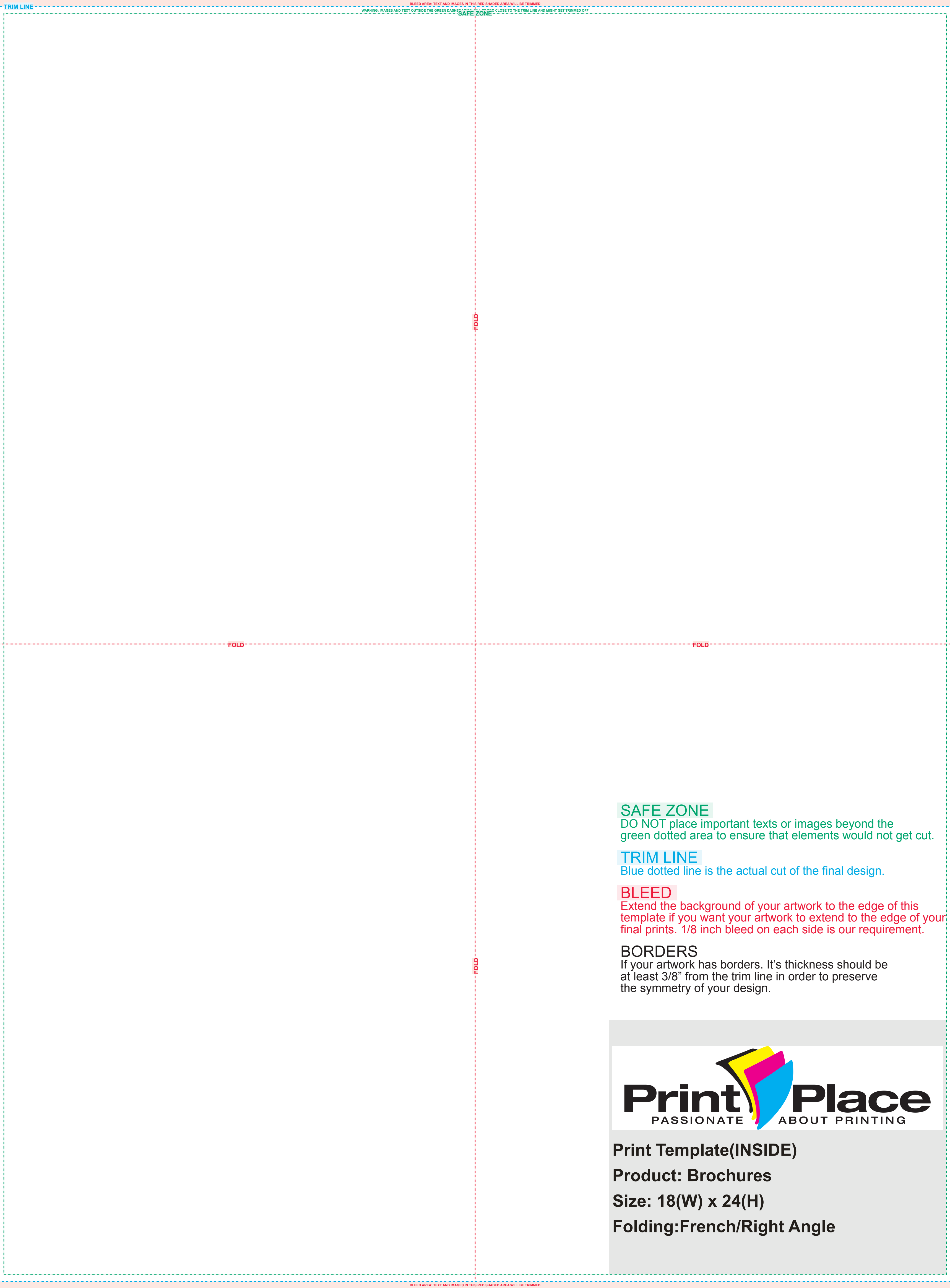
PASSIONATE ABOUT PRINTING

Print Template(OUTSIDE)

Product: Brochures

Size: 18(W) x 24(H)

Folding: French/Right Angle



### SAFE ZONE

DO NOT place important texts or images beyond the green dotted area to ensure that elements would not get cut.

### TRIM LINE

Blue dotted line is the actual cut of the final design.

### BLEED

Extend the background of your artwork to the edge of this template if you want your artwork to extend to the edge of your final prints. 1/8 inch bleed on each side is our requirement.

### BORDERS

If your artwork has borders. It's thickness should be at least 3/8" from the trim line in order to preserve the symmetry of your design.



**Print Template(INSIDE)**  
**Product: Brochures**  
**Size: 18(W) x 24(H)**  
**Folding:French/Right Angle**